

STRUCTURAL STAMP

EDDINGTON  
ENGINEERING



1116 SINGINGWOOD ROAD  
SACRAMENTO, CALIFORNIA 95864  
(916) 359-5300 FAX (916) 359-5301

The Chew Building  
130 Bush Street  
San Francisco, CA 94104

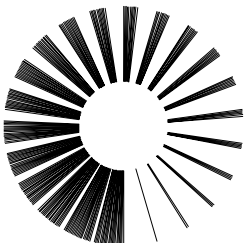
Elevator Modernization - 14220

Submittal Layout Shop Drawings

OWNER:  
The Chew Company  
130 Bush St., 3rd Floor  
San Francisco, CA 94104  
contact: Mr. David Chew  
phone: (415) 397-3374  
fax: (415) 397-3376  
e-mail:  
david@thechewcompany.com

ELEVATOR CONSULTANT:  
Lerch, Bates & Associates Inc.  
1368 Bush Street, Suite 201  
San Francisco, CA 94109  
contact: Mr. James F. Paine  
phone: (415) 931-4018  
fax: (415) 931-4032  
e-mail: jpaine@lerchbates.com

ELEVATOR CONTRACTOR:  
Otis Elevator Company  
444 Spear St. #100  
San Francisco, CA 94105  
contact: Mr. Von O'Nan  
phone: (415) 546-8105  
fax: (415) 546-0907  
e-mail: von.onan@otis.com



Otis

A United Technologies Company

444 Spear St., San Francisco, CA 94105 FAX (415) 546-0907

FINAL  
FOR FABRICATION  
& CONSTRUCTION

ELEVATOR NO. 2947  
SUBMITTAL RECORD  
PRELIMINARY, 08/12/2003  
FINAL, 08/25/2003  
RECORD SET, .

RCB ELEVATOR CONSULTING, LLC  
2117 BUSH ST., SAN FRANCISCO, CA 94115-3103  
(415) 771-4180 FAX: (415) 354-3454 rich@BLASKA.COM

EQUIPMENT DATA

ELEVATOR NUMBER(S):	(E) #1	ELEVATOR QUANTITY:	(E) One (1)
LOAD CAPACITY & SERVICE:	(E) 1,200 Lbs., Passenger		
CONTRACT SPEED:	(E) 225 FPM	EQUIPMENT VERSIONS:	Orig. Otis Elevator 1910 MDCS, 1920, 1934 & 1964
TRAVEL DISTANCE:	(N) 112' - 8"		
STOPS & OPENINGS:	(E) 11 / 11, 10 Front & 1 Side (Delete (E) Attic Lndg.)		
LANDINGS SERVED:	(E) B @ Front, 1 @ Side, 2 - 10 @ Front		
MACHINE ROOM:	(N) Overhead @ Roof Level (Abandon (E) Above)		
ENTRANCE SIZE & TYPE:	See Drawings for (N) & (E) Entrance Size & Type		
PLATFORM SIZE:	(N) 5'-6" x 4'-6" w/ Cropped Corners @ Rails		
CONTROL TYPE:	(N) Otis GEM #E411M-VF Solid State AC		
CONTROL OPERATION:	(N) Selective Collective Automatic		
DRIVE MACHINE:	(N) H.W. #54 Geared R.H. w/Disk Brake		
DRIVE MOTOR:	(N) Reuland 15 HP, 480 VAC 1200 RPM		
ISOLATION TRANSFORMER:	(N) 208/480 VAC Step Up Transformer, 246 lbs.		
INCOMING VOLTAGE:	(E) 208 VAC, 3-Phase, 60 HZ		
MAINLINE DISCONNECT:	(N) 100 Amp Fused Disconnect in (N) Machine Room		
FULL LOAD RUN CURRENT:	(N) 74 Amp		
HEAT GENERATION:	(N) 6,400 BTU/HR (Control Only)		
CAR DOOR EQUIPMENT:	(N) Otis I-Motion II Operators & Equip.		
HALL DOOR EQUIPMENT:	(N) Otis Tracks, Closures & Interlocks, etc.		
CAR & HALL FIXTURES:	(N) ADA Compliant (See Separate Drawings)		
GOVERNOR (● OVHD.):	(N) H.W. #201 R.H.	SAFETY: CAR BRAKE:	(N) H.W. #480 Spl.
GOVERNOR ROPE:	(N) 3/8"	CAR BUFFER:	(E) West #OC 9" Stroke
HOIST ROPE:	(N) 5/8" x (4)	ROPING TYPE:	(E) 1:1 OVHD Drop
STEEL MAIN GUIDE RAILS:	(E) 15 lb./ft.	STEEL CMT. GUIDE RAILS:	(E) 8 lb./ft.
CAR & CMT. RAIL BKTS.:	(E) Otis w/ Stiffener	CMT. FRAME & WEIGHTS:	(N) H.W. w/ Steel Plates
DEFLECTOR SHEAVE:	(N) H.W. 25"Ø in Overhead		

WEIGHTS EA. CAR

RATED CAPACITY:	(E) 1,200#	CAR GUIDES:	(N) ELPRO #815RG
EMPTY CAR (ESTIMATED):	(N) 3,400#	CMT. GUIDES:	(N) ELPRO #816DS
HOIST ROPES & 1/2 TRAVELER & COMP.:	(N) 850#	SEISMIC SWITCH:	(N) Dual-Axis Switch
COUNTERWEIGHT ● 40%:	(E) 3,880#	DERAILMENT DETECTOR:	(N) Dual Ring & String
GROSS WEIGHT:	(E) 9,330#		

DRAWN BY: R. BLASKA	REV	DESCRIPTION:	DATE:	BY:
RCB CONSULTING (415) 771-4180	A	FINAL AFTER OTIS EDDINGTON & H.W. REVIEW & CORRECTIONS	08/25/03	RCB
DRAW DATE: 08/12/2003				
DIMENSIONS: N/A				



A United Technologies Company  
444 Spear St., San Francisco, CA 94105 FAX (415) 546-0907

PROJECT: The Chew Building  
130 Bush Street  
San Francisco, CA 94104

OWNER: The Chew Company

CONSULTANT: Lerch, Bates & Associates Inc.

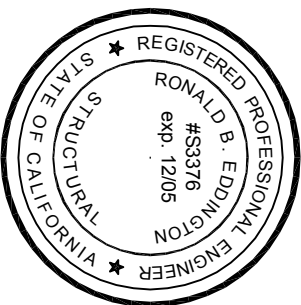
DWG.: TITLE SHEET, EQUIP. DATA & CONTRACT INFO

SCALE: N/A STATE NO.: 2947 A SHEET 1 OF 12

**ABBREVIATIONS:**  
AFF = ABOVE FINISH FLOOR  
ASSY. = ASSEMBLY  
B.O. = BY OTHERS OR OWNER  
C = STEEL CHANNEL  
CWT. = COUNTERWEIGHT  
D.B.G. = DIMENSION BETWEEN GUIDE RAILS  
DWGS. = DRAWINGS  
E = EXISTING TO REMAIN  
GFCI = GROUND FAULT CIRCUIT INTERRUPTER  
H.W. = HOLLISTER WHITNEY ELEVATOR CORP.  
I.D. = INSIDE DIMENSION  
L = STEEL ANGLE  
LG = LONG  
L.H. = LEFT HAND  
LNDG = LANDING(S)  
N = NEW  
N.T.S. = NOT TO SCALE  
O.C. = ON CENTER  
O.D. = OUTSIDE DIMENSION  
O.VHD. = OVERHEAD  
PL = STEEL PLATE  
R = REMODEL/REFURBISH EXISTING  
REQ. = REQUIRED  
R.H. = RIGHT HAND  
SMS = SHEET METAL SCREW  
T.B.C. = TO BE CONFIRMED  
TYP. = TYPICAL  
T.O.S. = TOP OF STEEL  
V.I.F. = VERIFY IN THE FIELD  
W = WIDE FLANGE STEEL BEAM

STRUCTURAL STAMP

EDDINGTON  
ENGINEERING



1116 SINGINGWOOD ROAD  
SACRAMENTO, CALIFORNIA 95864  
(916) 359-5300 FAX (916) 359-5301

DRAWN BY:	REV	DESCRIPTION:	DATE:	BY:
R. BLASKA				
RCB CONSULTING				
FRM: (415) 771-4180	A	FINAL AFTER OTIS EDDINGTON & H.W. REVIEW & CORRECTIONS	08/25/03	RCB
DRAW DATE: 08/12/2003				
DIMENSIONS: FEET & INCHES				



A United Technologies Company  
444 Spear St., San Francisco, CA 94105 FAX (415) 546-0907

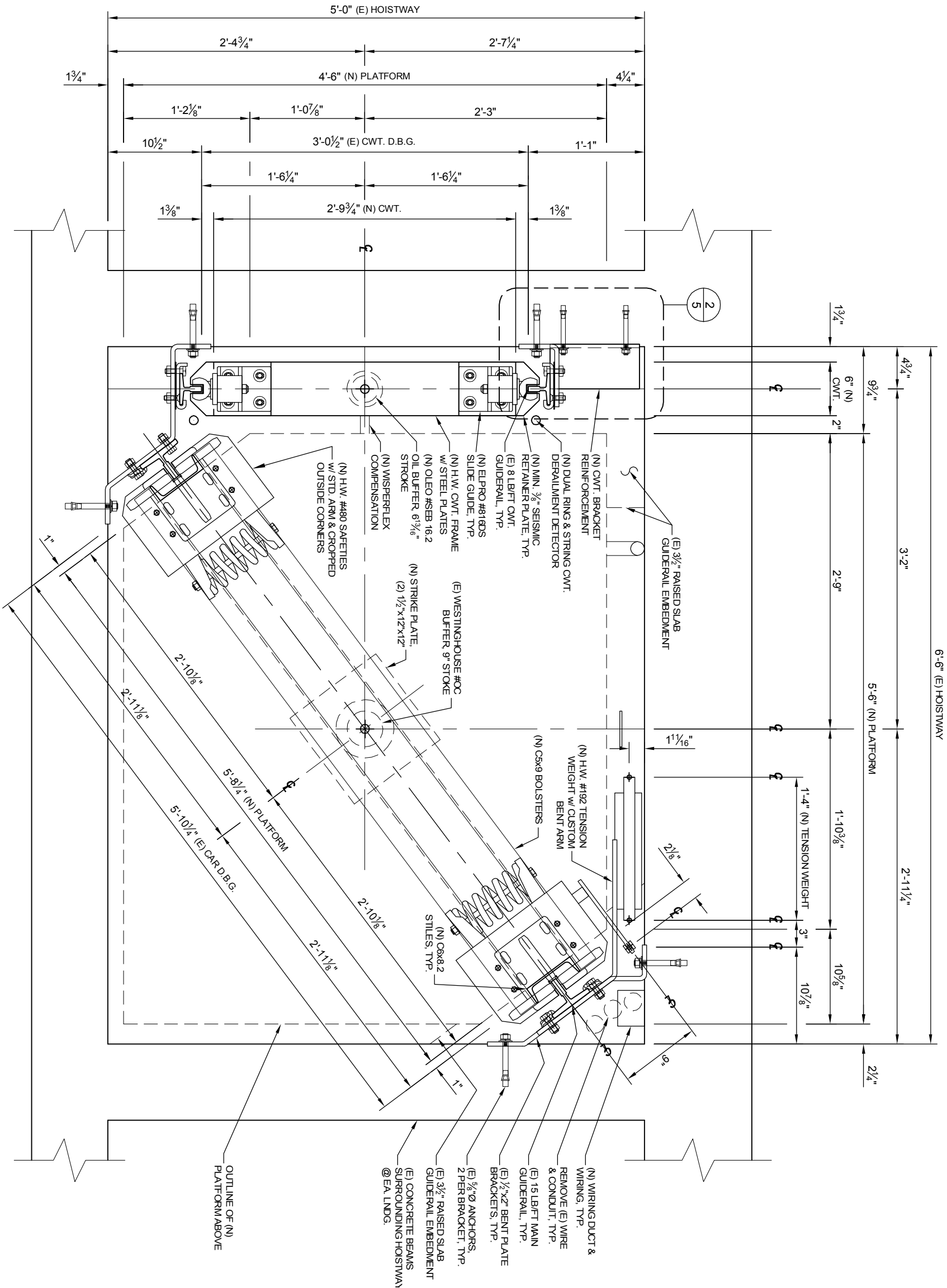
PROJECT: The Chew Building  
130 Bush Street  
San Francisco, CA 94104

OWNER: The Chew Company

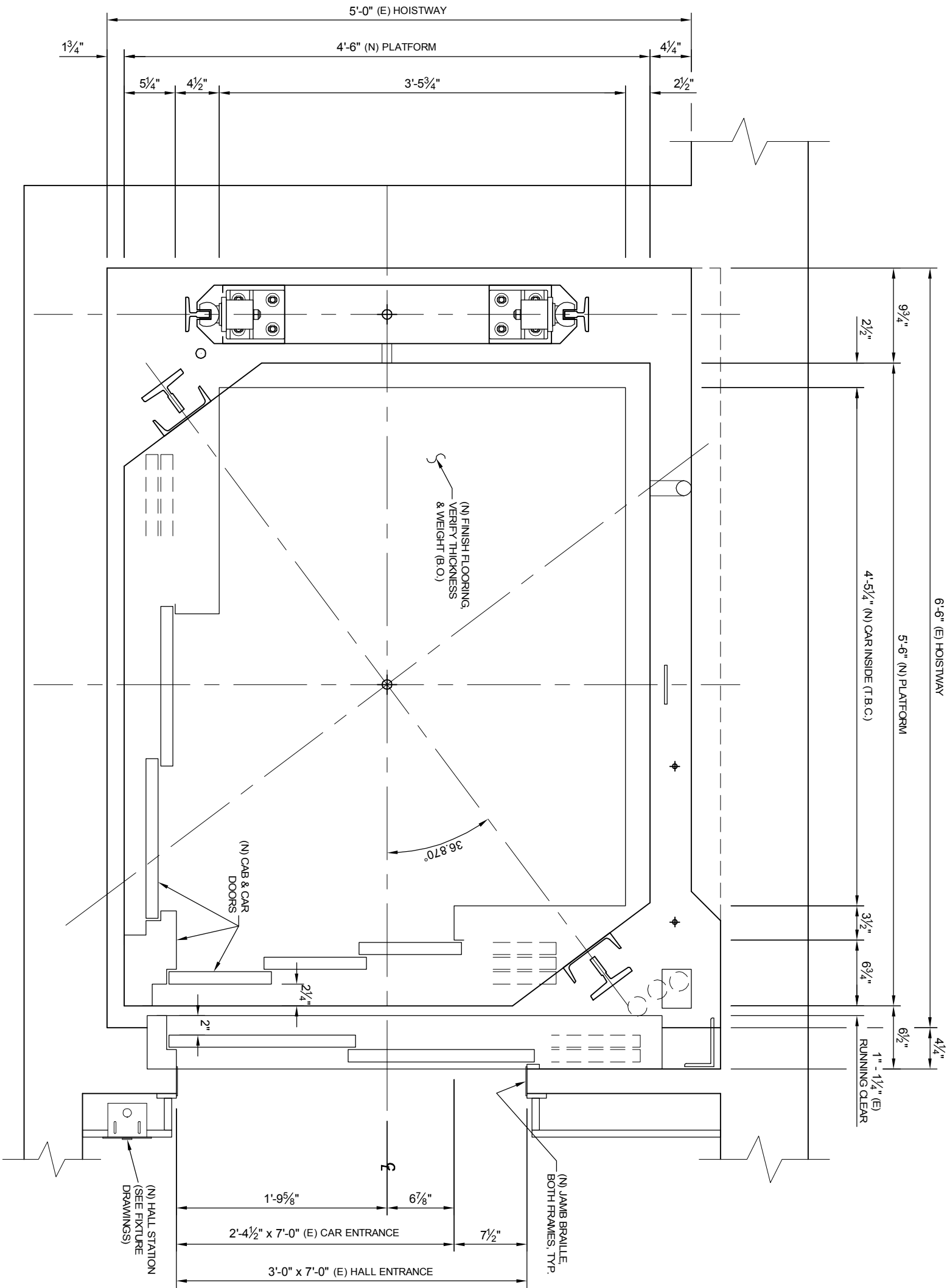
CONSULTANT: Lerch, Bates & Associates Inc.

DWG.: HOISTWAY PLAN VIEW @ BEAMS  
GUIDERAIL BRACKETS & BEAMS

SCALE: 1"=1'-0" STATE NO.: 2947 SHEET 2 OF 12



1 HOISTWAY PLAN VIEW @ BEAMS  
LOCATION: TYPICAL RAIL BRACKET ELEVATION  
ALSO SHOWING CWT. PLATFORM & SAFETY



1 HOISTWAY PLAN VIEW @ LOBBY  
LOCATION: 2nd LNDG. @ SIDE OPENING  
ALSO SHOWING CAR INTERIOR DIMENSIONS

- NOTES:**
1. SEE LERCH, BATES & ASSOC., INC. SPECIFICATION SECTION 14220 AND APPROVED CONTRACT DOCUMENTS. IN ADDITION TO THESE DRAWINGS, FOR COMPLETE SCOPE OF WORK.
  2. SOME DEVIATION IN FINAL LOCATIONS AND DIMENSIONS MAY BE REQUIRED AS NECESSITATED BY ACTUAL FIELD CONDITIONS. COMPLIANCE WITH ALL CODES REGARDING FIELD PLACEMENTS, LOCATIONS AND DIMENSIONS WILL BE FOLLOWED. DUE TO SURVEY ACCESSIBILITY DIFFICULTIES, ALL DIMENSIONS SHOWN SHOULD BE RECONFIRMED FOR ACCURACY IN THE FIELD.
  3. AS A NEW DRIVE MACHINE WILL BE INSTALLED, THE ADEQUACY OF THE AFFECTED BUILDING STRUCTURE TO SUPPORT THE NEW AND EXISTING LOADS, INCLUDING THE ABANDONED ORIGINAL ELEVATOR DRIVE AND CONTROL EQUIPMENT, HAS BEEN VERIFIED BY MR. RONALD EDDINGTON, EDDINGTON ENGINEERING, LICENSED STRUCTURAL ENGINEER (SEE STAMP) AS REQUIRED BY ASME A17.1, 1996, RULE 1201.5.
  4. THIS EQUIPMENT, AS ALTERED BY THIS MODERNIZATION, IS DESIGNED ACCORDING TO THE REQUIREMENTS OF ASME A17.1, 1996 SAFETY CODE FOR ELEVATORS AND ALL STATE & LOCAL CODES WHEREVER POSSIBLE. SOME EXISTING CONDITIONS AND STRUCTURAL LIMITATIONS PRECLUDE STRICT COMPLIANCE. THESE DRAWINGS SHALL BE REVIEWS BY THE GOVERNING AUTHORITIES FOR APPROVAL AND ACCEPTANCE PRIOR TO CONSTRUCTION.

DRAWN BY:	REV	DESCRIPTION:	DATE:	BY:
R. BLASKA				
RCB CONSULTING	REV	FINAL AFTER OTIS EDDINGTON & H.W. REVIEW & CORRECTIONS	08/25/03	RCB
FRM: (415) 771-4180	A			
DRAW DATE: 08/12/2003				
DIMENSIONS: FEET & INCHES				



A United Technologies Company  
444 Spear St., San Francisco, CA 94105 FAX (415) 546-0907

PROJECT: The Chew Building  
130 Bush Street  
San Francisco, CA 94104

OWNER: The Chew Company

CONSULTANT: Lerch, Bates & Associates Inc.

DWG.: HOISTWAY PLAN VIEW @ 2nd LNDG. LOBBY & CAR PLAN DIMS.

SCALE: 1"=1'-0" STATE NO.: 2947 REV A SHEET 3 OF 12

WORK BY OWNER

HOISTWAY:

1. REMOVE SWING DOOR ENTRANCE AT 3rd LANDING, FLOOR "2" INCLUDING ADJOINING WALL TO A MINIMUM 12" WIDER AND 6" HIGHER THAN NEW ENTRANCE TO BE INSTALLED. PROVIDE SILL RECESS AND SUPPORT AT NEW HOISTWAY ENTRANCE, EXTEND FULL WIDTH OF HOISTWAY. GROUT AFTER SILL IS SET.
2. PROVIDE FOR ALL CUTTING AND REPAIRING OF WALLS, FLOORS, ETC. INCLUDING HALL FIXTURE CUTOUTS, NEEDED FOR ELEVATOR INSTALLATION.
3. PROJECTIONS WITHIN HOISTWAY OF 2" OR MORE SHALL BE BEVELED AT AN ANGLE OF 75° FROM HORIZONTAL.
4. PROVIDE FINISH FLOORING AND UNDERLAYMENT TOTALING 3/4" PROPERLY SECURED ON TOP OF ELEVATOR PLATFORM. FINISH FLOORING MUST BE FLUSH WITH ELEVATOR CAR SILLS AND EACH ELEVATOR ENTRANCE SILL AT EACH LANDING.
5. PROVIDE A WALL VENT AT OPENING FROM THE REMOVED ROOF ACCESS DOORWAY IN THE NEW MACHINE ROOM AT SPACE BELOW NEW STEEL FLOOR DECK. THE HOISTWAY WILL VENT THROUGH THE NEW CAVITY BETWEEN THE CONCRETE FLOOR AND NEW DECK.

PIT:

6. PROVIDE A GUARDED & GROUNDED PIT LIGHT AND A GROUND FAULT INTERRUPT (GFCI) DUPLEX OUTLET ACCESSIBLE FROM THE PIT. LOCATE AWAY FROM ELEVATOR EQUIPMENT AS SHOWN. PROVIDE A SWITCH FOR THE LIGHT WITHIN 18" TO 24" ABOVE PIT ACCESS LANDING FINISH FLOOR, AT SIDE WALL - STRIKE SIDE OF ENTRANCE.

MACHINE ROOM:

7. REMOVE EXISTING WIRE MESH ENCLOSURE AND PIPE SUPPORTS IN THE ROOF ELEVATION NEW ELEVATOR MACHINE ROOM. REMOVE THE EXISTING ACCESS DOOR TO THE ROOF AND FILL IN THE OPENING WITH A PROPER WALL ENCLOSURE ABOVE THE NEW ROOM METAL DECK ELEVATION AND INSTALL A WALL VENT BELOW THE NEW METAL DECK ELEVATION.
8. INSTALL A NEW ROOF ACCESS DOOR IN THE VESTIBULE BETWEEN THE STAIRS AND THE NEW MACHINE ROOM ENTRANCE AS SHOWN. INSTALL A NEW MEANS OF ACCESS TO THE ABANDONED ORIGINAL ELEVATOR MACHINE ROOM FOR INSPECTION PURPOSES FROM OUTSIDE THE NEW MACHINE ROOM, IF REQUIRED BY CODE.
9. PROVIDE AN ENCLOSED MACHINE ROOM WITH SELF-CLOSING, SELF-LOCKING DOOR IN KEEPING WITH ALL APPLICABLE CODES WITH MINIMUM CLEARANCES AS SHOWN ON THE MACHINE ROOM DETAIL.
10. PROVIDE ALL ELECTRICAL SERVICES AND DEVICES IN ACCORDANCE WITH THE CALIFORNIA ELECTRICAL CODE INCLUDING GUARDED & GROUNDED CEILING LIGHTING AND A GROUND FAULT INTERRUPT (GFCI) DUPLEX OUTLET. REMOVE POWER FROM ABANDONED UPPER MACHINE ROOM. PROVIDE POWER FOR INSTALLING, TESTING, AND ADJUSTING THE ELEVATOR.
11. PROVIDE VENTILATION FOR MACHINERY AND CONTROL EQUIPMENT AS NECESSARY TO AVOID OVERHEATING OF THE EQUIPMENT AND TO ENSURE SAFE AND NORMAL OPERATION OF THE ELEVATOR AND AS REQUIRED BY THE BUILDING CODE.
12. BRING AMPLE ELECTRICAL POWER TO THE TERMINALS IN THE STARTER ENCLOSURE BY WAY OF A SINGLE FUSED DISCONNECT SWITCH, LOCKABLE IN THE OPEN POSITION.
13. PROVIDE A SEPARATE, DEDICATED 115/120 VAC CIRCUIT, WITH LOCKABLE DISCONNECT, FOR ELEVATOR CAR LIGHTING AND VENTILATION. PIPE AND WIRE FROM THE DISCONNECT TO THE ELEVATOR CONTROLLER.
14. PROVIDE CONNECTIONS FOR THE CAR TELEPHONE TO THE ELEVATOR CONTROLLER.
15. WHERE REQUIRED, PROVIDE SMOKE DETECTORS IN THE ELEVATOR LOBBIES, HOISTWAY OVERHEAD AND MACHINE ROOM. TERMINATE CONNECTIONS TO THE ELEVATOR CONTROLLER.

DRAWN BY:	REV	DESCRIPTION:	DATE:	BY:
R. BLASKA				
RCB CONSULTING		FINAL AFTER OTIS EDITIONING & H/W, REVIEW & CORRECTIONS	08/25/03	RCB
FIRM: (415) 771-4180	A			
DRAW DATE: 08/12/2003				
DIMENSIONS: FEET & INCHES				



A United Technologies Company  
444 Spear St., San Francisco, CA 94105 FAX (415) 546-0907

PROJECT: The Chew Building  
130 Bush Street  
San Francisco, CA 94104

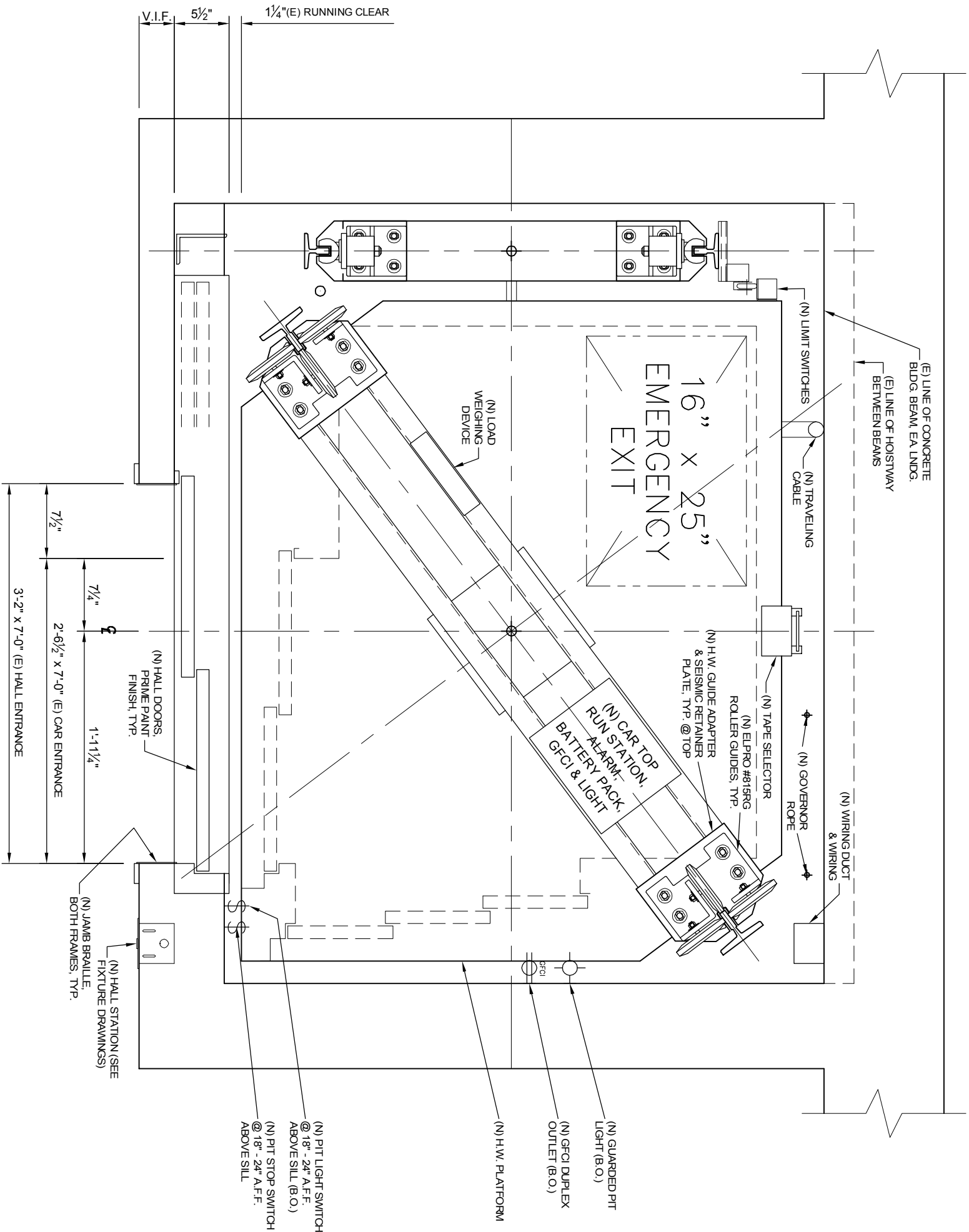
OWNER: The Chew Company

CONSULTANT: Lerch, Bates & Associates Inc.

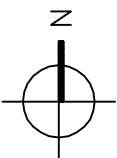
DWG.: HOISTWAY PLAN VIEW @ TYP.  
LANDINGS & CAR TOP VIEW

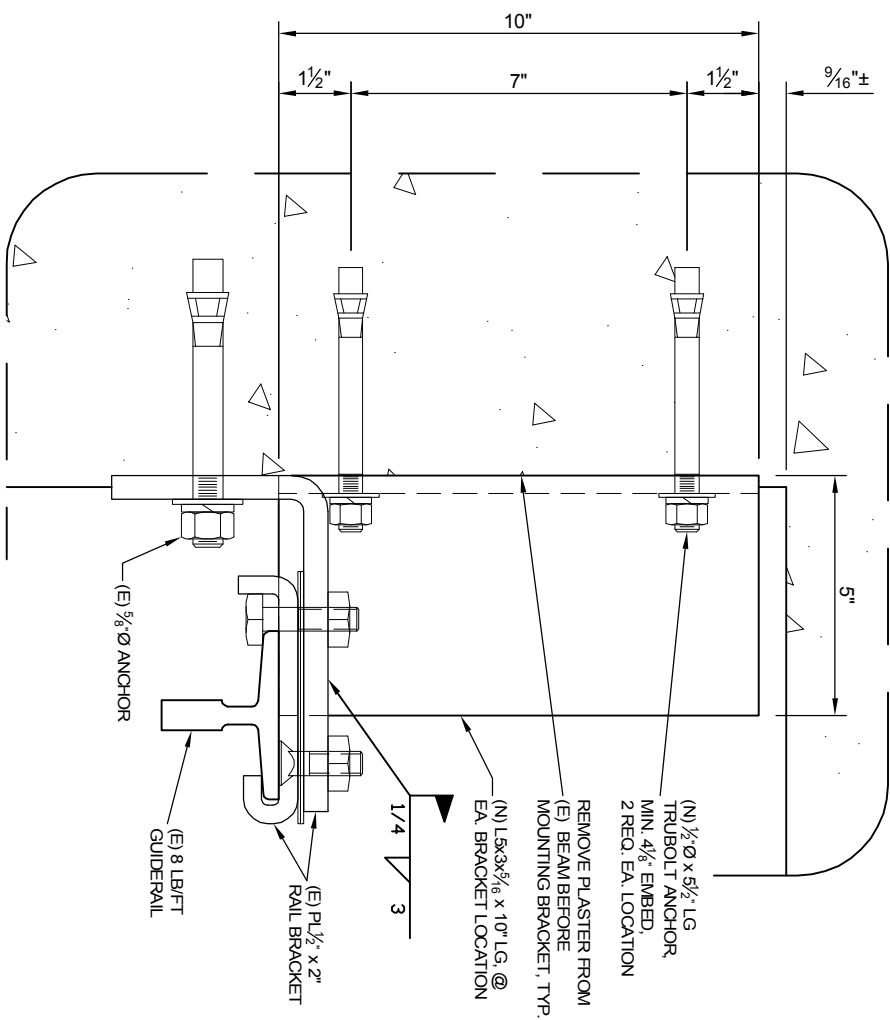
SCALE: 1"=1'-0" STATE NO.: 2947

REV	DWG. #
A	4
SHEET	4 OF 12

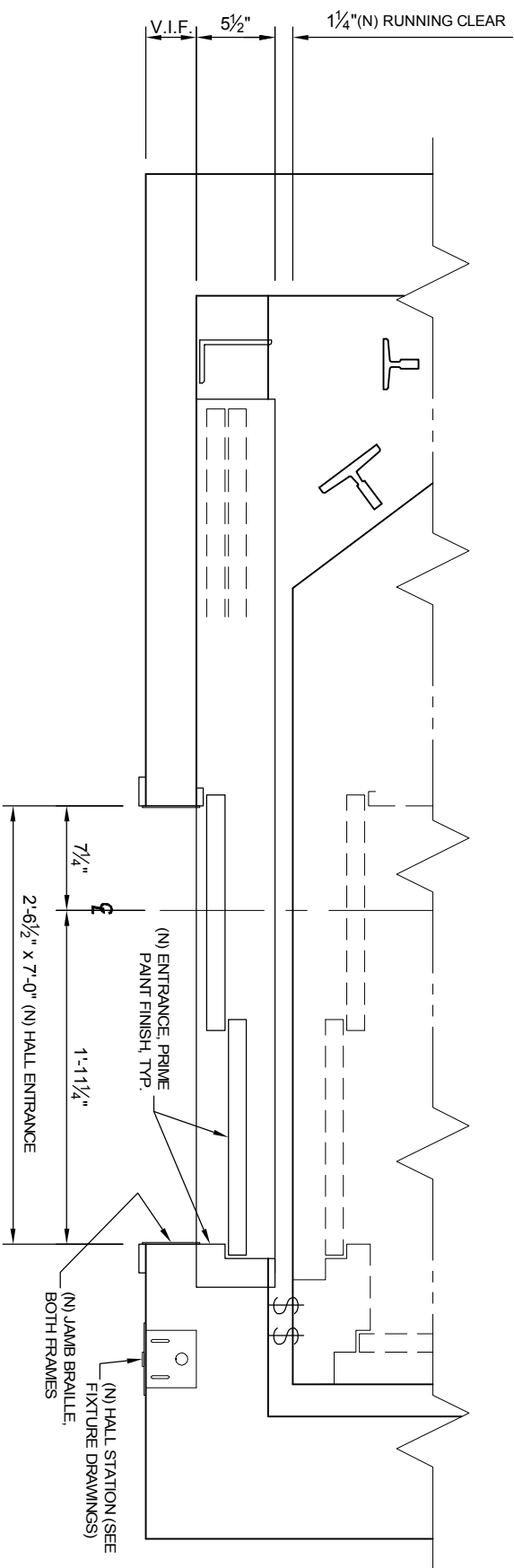


1 HOISTWAY PLAN VIEW @ 2nd FLOOR  
LOCATION: 3rd LNDG. = "2"  
(N) POWER OPERATED OPENING

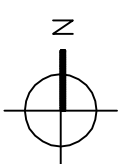




**2** CWT. RAIL BRACKET STIFFENING  
SCALE: 3"=1'-0"  
LOCATION: EA. LNDG.

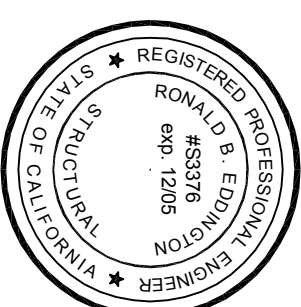


**1** HOISTWAY PLAN VIEW @ 2nd FLOOR  
SCALE: 1"=1'-0"  
LOCATION: 3rd LNDG. = "2"  
(N) POWER OPERATED OPENING



STRUCTURAL STAMP

EDDINGTON  
ENGINEERING



1116 SINGINGWOOD ROAD  
SACRAMENTO, CALIFORNIA 95864  
(916) 359-5300 FAX (916) 359-5301

DRAWN BY:	REV	DESCRIPTION:	DATE:	BY:
R. BLASKA				
RCB CONSULTING	A	FINAL AFTER OTIS EDDINGTON & H.W. REVIEW & CORRECTIONS	08/25/03	RCB
FRM: (415) 721-4180				
DRAW DATE: 08/12/2003				
DIMENSIONS: FEET & INCHES				



A United Technologies Company  
444 Spear St., San Francisco, CA 94105 FAX (415) 546-0907

PROJECT: The Chew Building  
130 Bush Street  
San Francisco, CA 94104

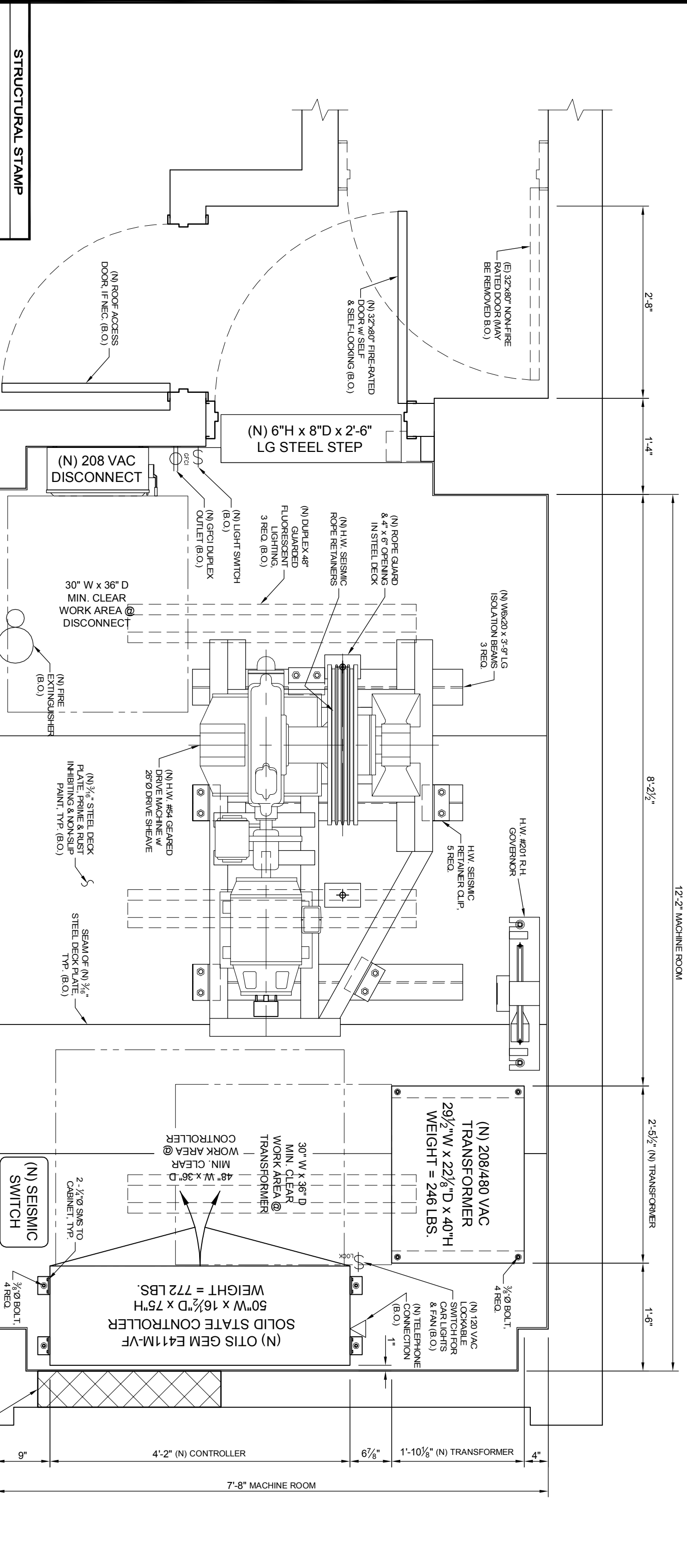
OWNER: The Chew Company

CONSULTANT: Lerch, Bates & Associates Inc.

DWG.: HOISTWAY PLAN VIEW @ 3rd  
LNDG, FLOOR "2" & (N) OPNG.

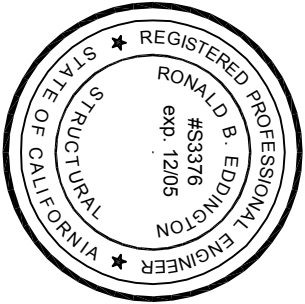
SCALE: AS NOTED STATE NO.: 2947 SHEET 5 OF 12





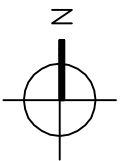
STRUCTURAL STAMP

EDDINGTON  
ENGINEERING



1116 SINGINGWOOD ROAD  
SACRAMENTO, CALIFORNIA 95864  
(916) 359-5300 FAX (916) 359-5301

1 MACHINE ROOM PLAN VIEW  
SHOWING MACHINE, FLOORING DECK  
& CONTROL EQUIPMENT



DRAWN BY:	REV	DESCRIPTION:	DATE:	BY:
R.B. BLASKA	A	FINAL AFTER OTIS, EDDINGTON & H.W. REVIEW & CORRECTIONS	08/25/03	RCB
FRM: RCB CONSULTING (415) 771-2180				
DRAW DATE: 08/12/2003				
DIMENSIONS: FEET & INCHES				

PROJECT: The Chew Building  
130 Bush Street  
San Francisco, CA 94104

OWNER: The Chew Company

CONSULTANT: Lerch, Bates & Associates Inc.

DWG.: (N) MACHINE ROOM PLAN VIEW  
MACHINE & CONTROL LAYOUT

SCALE: 3/4" = 1'-0" STATE NO.: 2947



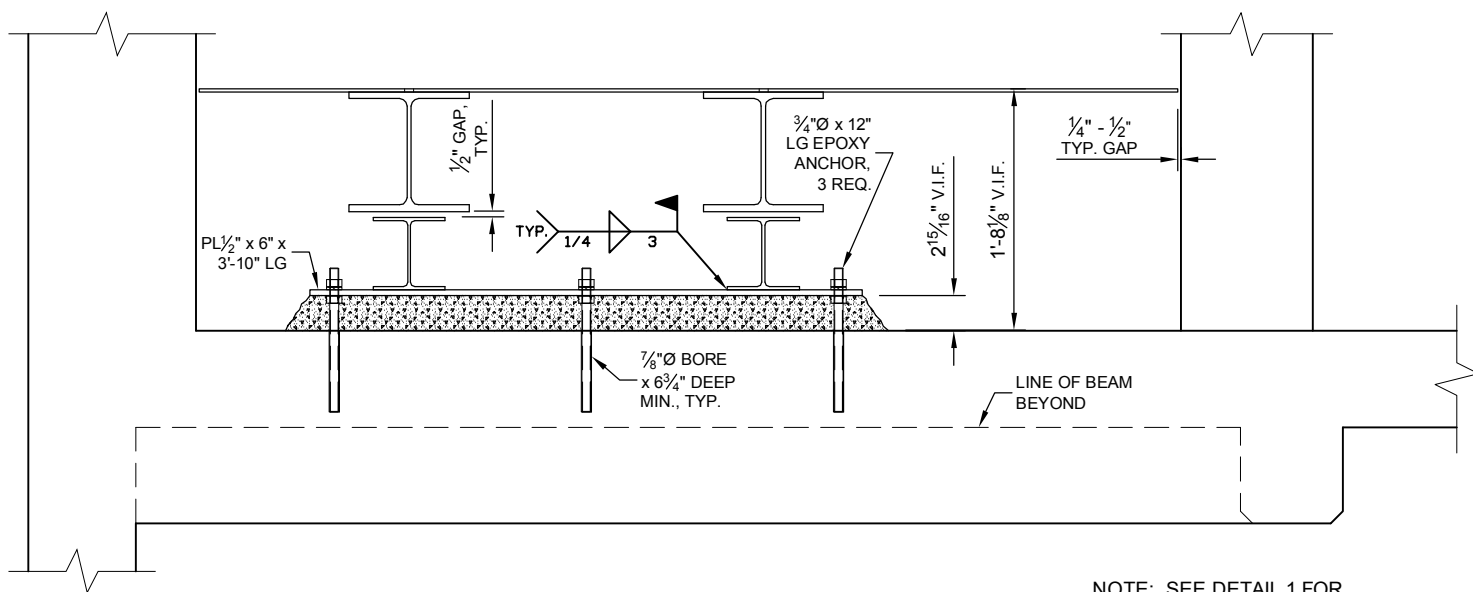
A United Technologies Company  
444 Spear St., San Francisco, CA 94105 FAX (415) 546-0907

(415) 546-0880

REV 7  
SHEET 7 OF 12

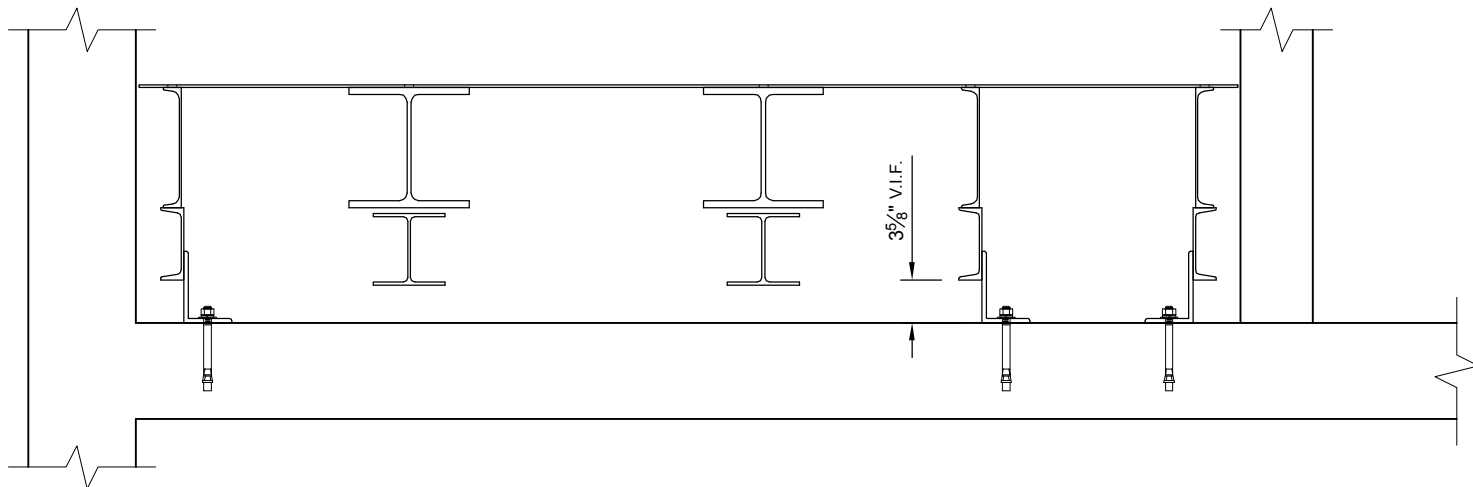






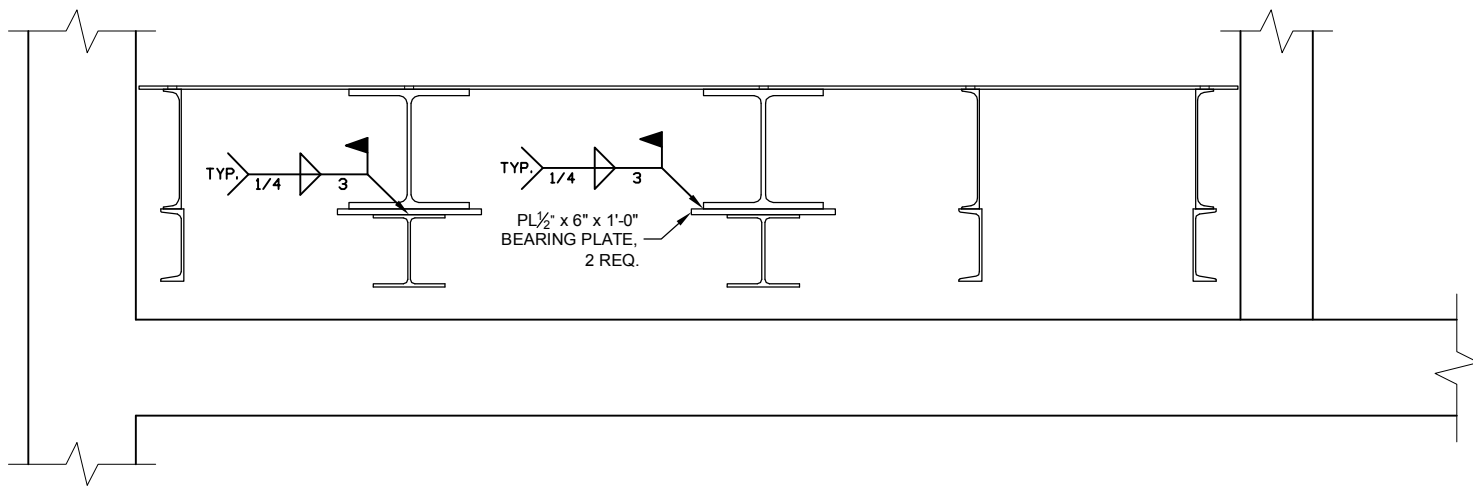
**4** MACHINE ROOM FLOOR & BEAM SECTION  
MACHINE & BRIDGE BEAM CONNECTIONS

NOTE: SEE DETAIL 1 FOR  
BEAM & CHANNEL LOCATIONS  
& DIMENSIONS



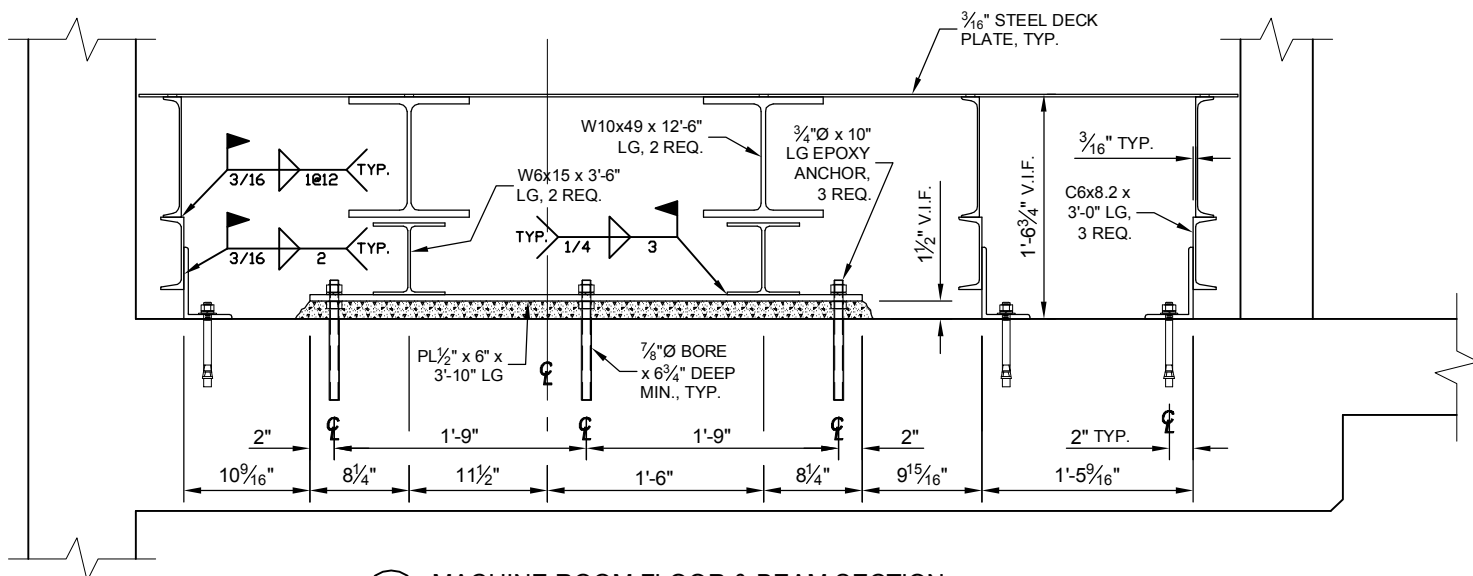
**3** MACHINE ROOM FLOOR & BEAM SECTION  
MACHINE & BRIDGE BEAM CONNECTIONS

NOTE: SEE DETAIL 1 FOR  
BEAM & CHANNEL LOCATIONS  
& DIMENSIONS



**2** MACHINE & BRIDGE BEAM SECTION  
MACHINE TO BRIDGE BEAM CONNECTIONS

NOTE: SEE DETAIL 1 FOR  
BEAM & CHANNEL LOCATIONS  
& DIMENSIONS




**1** MACHINE ROOM FLOOR & BEAM SECTION  
MACHINE & BRIDGE BEAM CONNECTIONS

**EDDINGTON  
ENGINEERING**



1116 SINGINGWOOD ROAD  
SACRAMENTO, CALIFORNIA 95864  
(916) 359-5300 FAX (916) 359-5301

DRAWN BY: R. BLASKA		REV	DESCRIPTION:	DATE:	BY:	PROJECT: The Chew Building 130 Bush Street San Francisco, CA 94104	
FIRM:	RCB CONSULTING (415) 771-4180	A	FINAL AFTER OTIS, EDDINGTON & H.W. REVIEW & CORRECTIONS	08/25/03	RCB	OWNER: The Chew Company	
DRAW DATE:	08/12/2003	.	.	.	.	CONSULTANT: Lerch, Bates & Associates Inc.	
DIMENSIONS:	FEET & INCHES	.	.	.	.	DWG.: (N) MACHINE BEAM & FLOOR SUPPORT SECTION DETAILS	
<div><div><div>Otis</div><div>A United Technologies Company (415) 546-0880 444 Spear St., San Francisco, CA 94105 FAX (415) 546-0907</div></div></div>						REV	DWG.# 9
						A	SHEET 9 OF 12

EDDINGTON  
ENGINEERING



1116 SINGINGWOOD ROAD  
SACRAMENTO, CALIFORNIA 95864  
(916) 359-5300 FAX (916) 359-5301



A United Technologies Company  
444 Spear St., San Francisco, CA 94105 FAX (415) 546-0907

**Otis**

DRAWN BY:	REV	DESCRIPTION:	DATE:	BY:
R. BLASKA				
FIRM: RBB CONSULTING	A	FINAL AFTER OTIS, EDDINGTON & H.W. REVIEW & CORRECTIONS	08/25/03	ROB
DATE: 08/12/2003				
DIMENSIONS: FEET & INCHES				

PROJECT: The Chew Building  
130 Bush Street  
San Francisco, CA 94104

OWNER: The Chew Company

CONSULTANT: Lerch, Bates & Associates Inc.

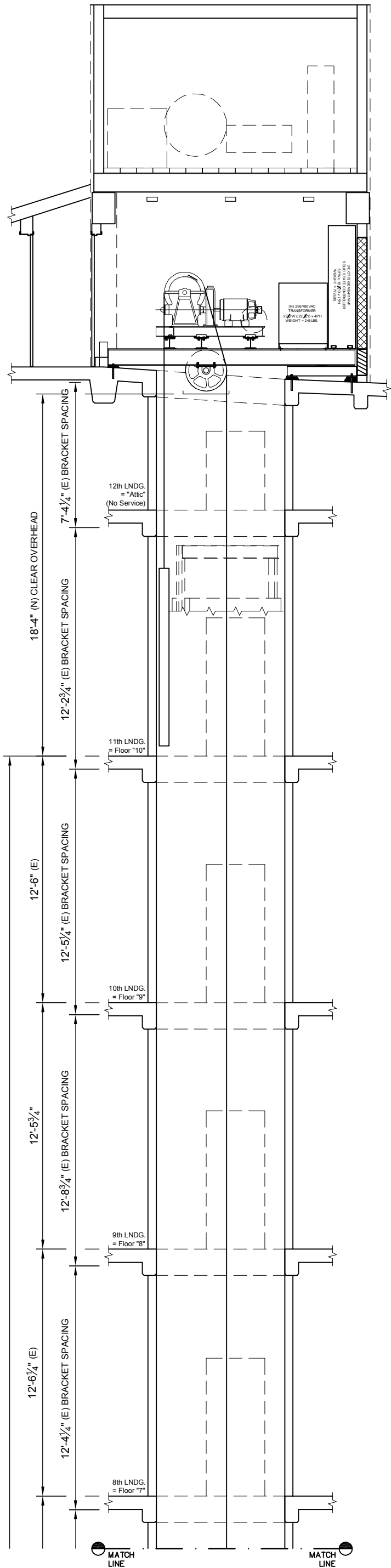
DWG.: HOISTWAY, PIT, OVERHEAD & MACHINE ROOM SECTIONS

SCALE: 3/16" = 1'-0" STATE NO.: 2947

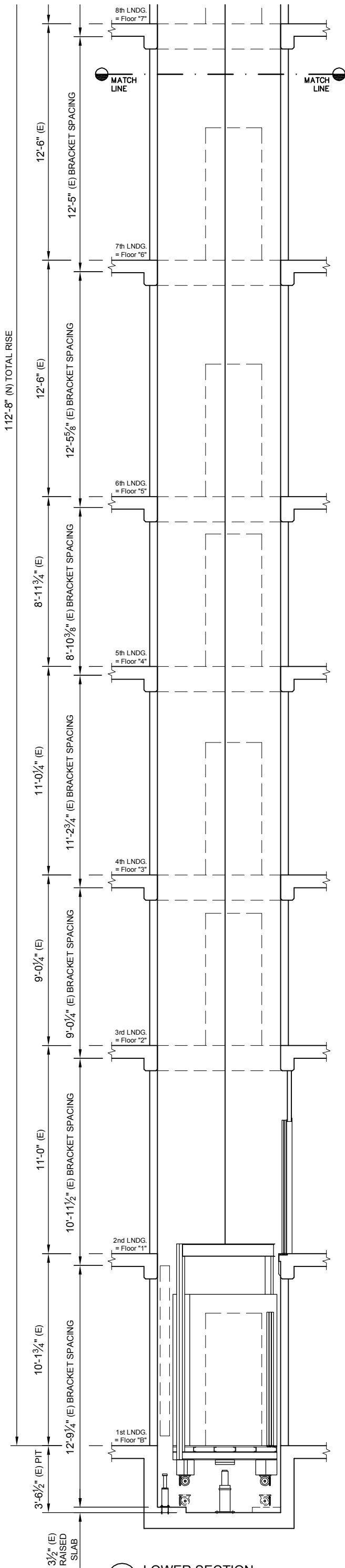
REV A

DWG.# 10

SHEET 10 OF 12



1 UPPER SECTION  
INCLUDING UPPER HOISTWAY  
& (N) & (E) MACHINE ROOMS

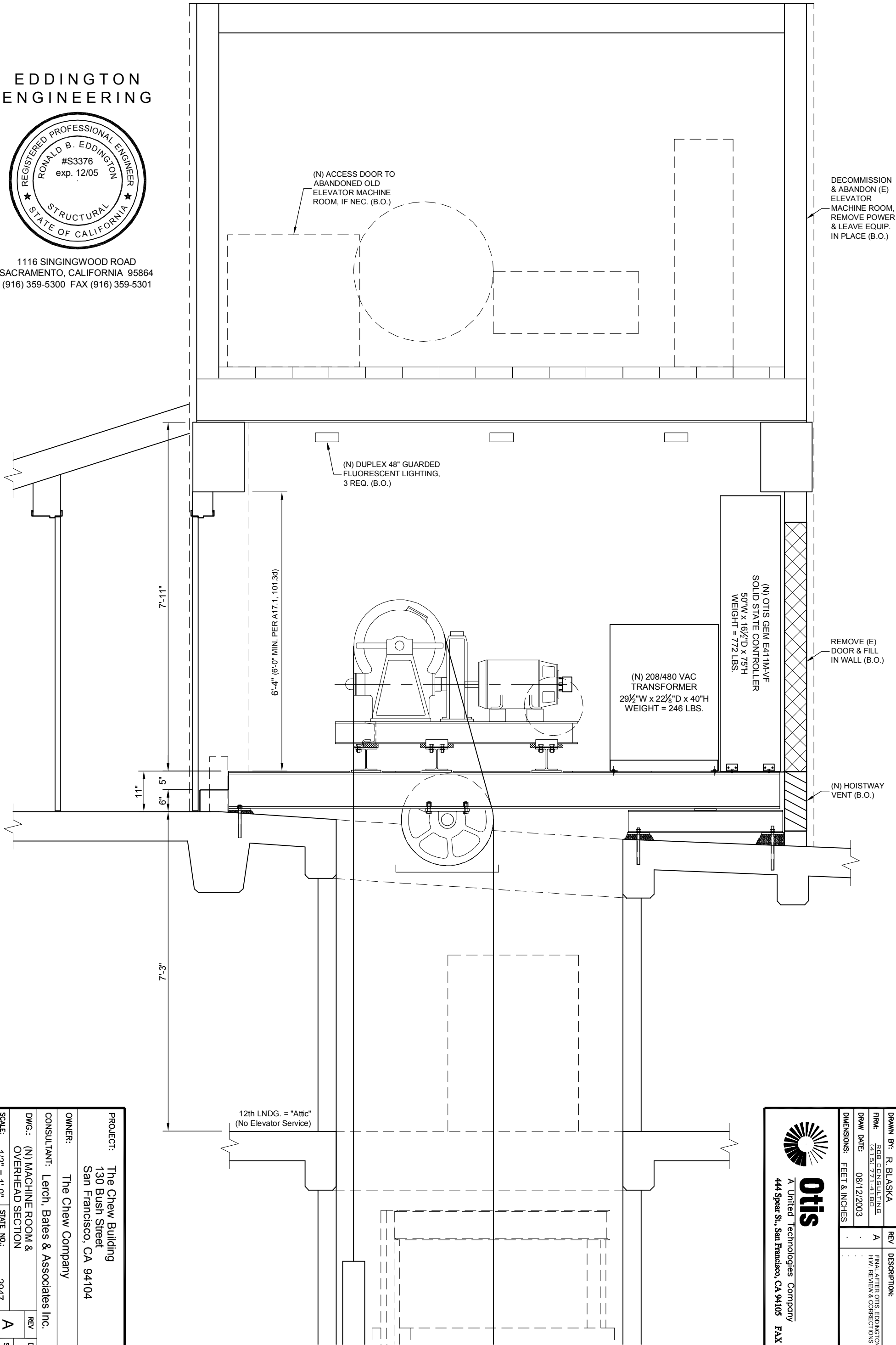


2 LOWER SECTION  
INCLUDING LOWER HOISTWAY  
& (E) PIT

EDDINGTON  
ENGINEERING



1116 SINGINGWOOD ROAD  
SACRAMENTO, CALIFORNIA 95864  
(916) 359-5300 FAX (916) 359-5301



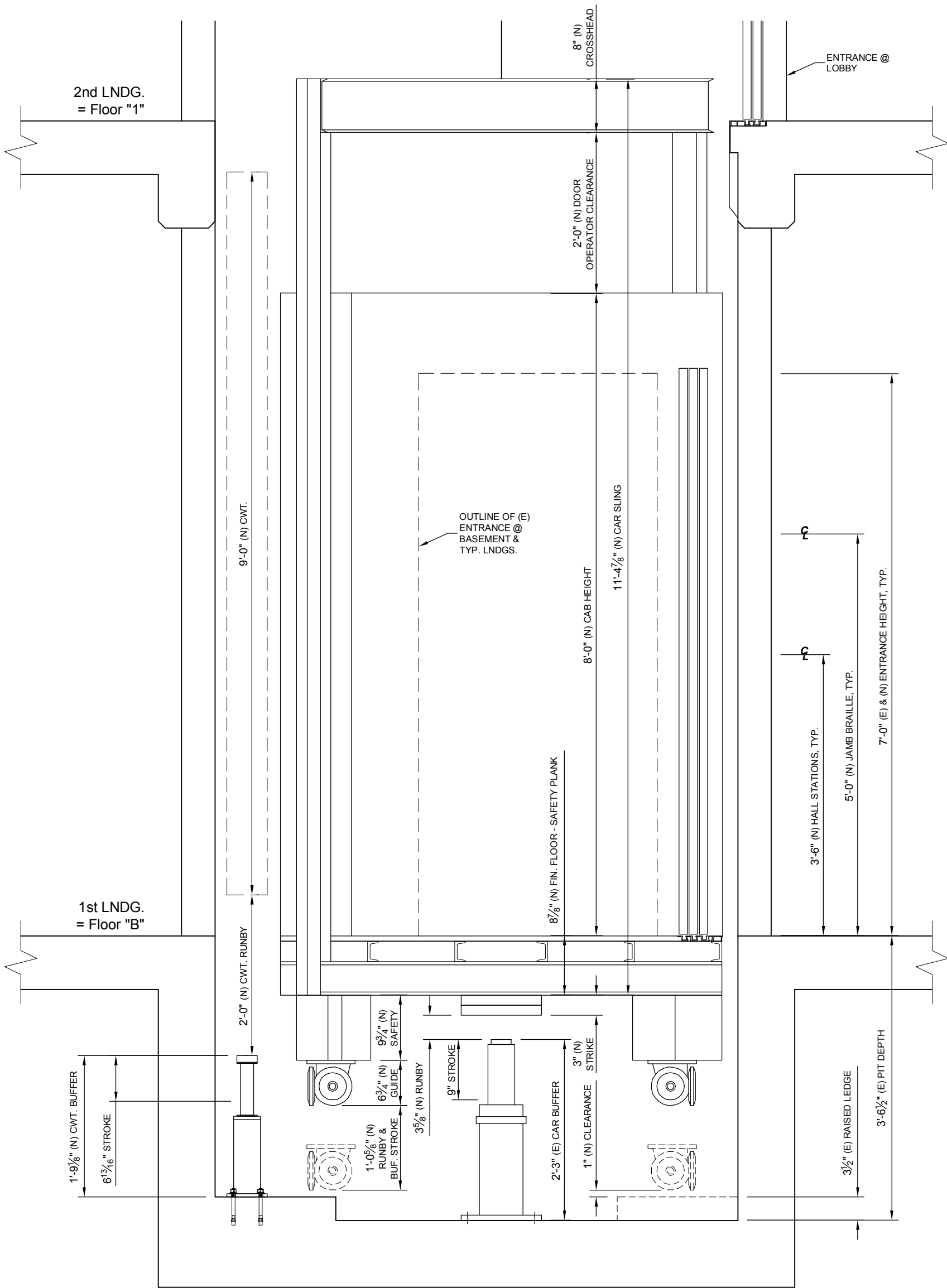
1 MACHINE ROOM & OVERHEAD SECTION  
INCLUDING TOP CAR & CWT. CLEARANCE



**otis**  
A United Technologies Company  
444 Spear St., San Francisco, CA 94105 FAX (415) 546-0907  
(415) 546-0880

DRAWN BY:	REV	DESCRIPTION:	DATE:	BY:
R. BLASKA				
RCB CONSULTING (415) 771-4180	A	FINAL AFTER OTIS EDDINGTON & H.W. REVIEW & CORRECTIONS	08/25/03	RCB
DRAW DATE: 08/12/2003				
DIMENSIONS: FEET & INCHES				



PROJECT: The Chew Building 130 Bush Street San Francisco, CA 94104			
OWNER: The Chew Company			
CONSULTANT: Lerch, Bates & Associates Inc.			
DWG.: (N) MACHINE ROOM & OVERHEAD SECTION	REV	DWG.#	
SCALE: 1/2" = 1'-0"	A	11	
STATE NO.: 2947		SHEET 11 OF 12	



1 PIT, BASEMENT LNDG. & CAR SECTION  
INCLUDING BOTTOM CAR  
& CWT. CLEARANCE

NOTES:

1. DUE TO THE EXISTING PIT DEPTH, THE MINIMUM PIT REFUGE AREA OF 24" x 48" x 24" HIGH PER ASME A17.1, 107.1a CANNOT BE OBTAINED. THIS LACK OF CLEARANCE IS A PREEXISTING CONDITION.
2. THE NEW CAR PLATFORM AND SAFETY PLANK SHALL BE DESIGNED AND REINFORCED TO SUPPORT THE DUTY AND LOADS PER CODE WITHIN THE DIMENSIONS SHOWN.

STRUCTURAL STAMP		DRAWN BY: R. BLASKA		REV	DESCRIPTION:	DATE:	BY:
<div>EDDINGTON ENGINEERING</div> <div></div> <div>1116 SINGINGWOOD ROAD SACRAMENTO, CALIFORNIA 95864 (916) 359-5300 FAX (916) 359-5301</div>		FIRM: <u>RCB CONSULTING</u> (415) 771-4180		A	FINAL AFTER OTIS, EDDINGTON & H.W. REVIEW & CORRECTIONS	08/25/03	RCB
		DRAW DATE: 08/12/2003		.	.	.	.
		DIMENSIONS: FEET & INCHES		.	.	.	.
<div><b>Otis</b> A United Technologies Company (415) 546-0880 444 Spear St., San Francisco, CA 94105 FAX (415) 546-0907</div>							
PROJECT: The Chew Building 130 Bush Street San Francisco, CA 94104							
OWNER: The Chew Company							
CONSULTANT: Lerch, Bates & Associates Inc.							
DWG.: (N) MACHINE ROOM & OVERHEAD SECTION					REV	DWG.# 12	
SCALE: 3/4" = 1'-0"		STATE NO.: 2947			A	SHEET 12 OF 12	